

# Activation and application

## ACTIVATION OF THE CAPSULE

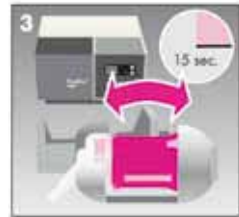
Activate by pressing capsule onto a stable surface.



Activated capsule.



**Immediately** start mixing for 15 seconds at 4000-4500 osc./min.



## APPLICATION OF CHEMFIL™ ROCK RESTORATIVE

Immediately place capsule into the extruder and ...



... extrude paste until seen through clear nozzle.



**Immediately** start dispensing. Begin at deepest part of the cavity.



Start packing, excess removal and contouring **immediately after placement**. Working time is 1 minute 30 seconds after activation.



Start finishing restoration no earlier than 4 minutes 30 seconds after end of working time (i.e. 6 minutes after activation).



After pressing the release button slightly rotate capsule to remove.

