

KaVo MASTERmatic Series

The new KaVo MASTERmatic Series.

BE YOUR BEST



KaVo. Dental Excellence.

The KaVo MASTERmatic Series. Be Your Best.

Best outcomes. Life-long.

Enjoy optimal access and maximal precision for all treatment scenarios. With the new KaVo MASTERmatic handpiece series.

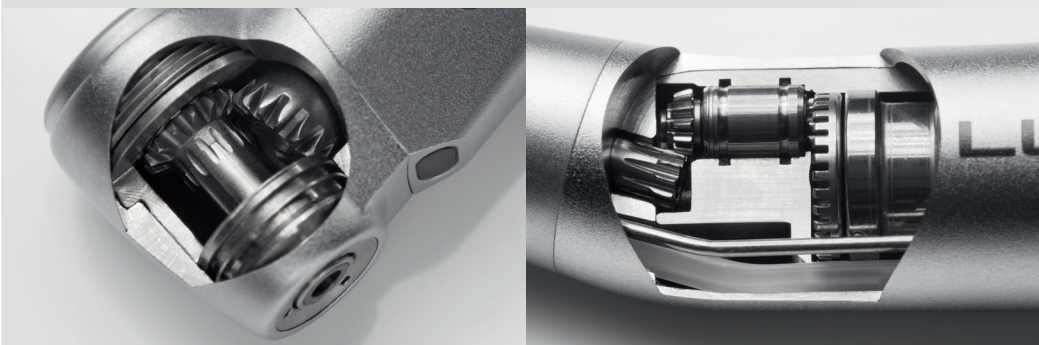
KaVo's new MASTERmatic Series replaces the bestselling GENTLEpower programme. This new benchmark of German engineering combines the spirit of innovation and the best features, proven hundreds of thousands of times, into one series. Manufactured according to uncompromising quality standards, the KaVo MASTERmatic Series was developed to allow you to fully realize your potential. You want the best and only the best? Then live according to your standards.

The new design language of the KaVo MASTERmatic Series also translates into clearly optimised features. The head size of the legendary high-speed handpiece was reduced by 20% without any loss of power. Experience the access you need at the power you want. Time-proven technology milestones were adopted and further optimised, such as, e.g., the exchangeable spray filter.

Speaking of exchangeable: The well-known KaVo principle of exchangeable heads has also been retained. Exchange the head quickly as needed and continue your work right away. Or combine shanks and heads to suit your clinical treatment preference.

By the way: Older INTRA LUX heads and GENTLEpower shanks are of course compatible with the new MASTERmatic Series.

KaVo master
series





BEST ACCESS AND PERFECT VISIBILITY

- Smaller head size
- Optimal angle combination
- Positioning of the light

MAXIMUM PRECISION

- Triple-Gear technology
- Hard metal bur guide
- Ergonomic Design

UNIQUE RELIABILITY

- KaVo durability
- Made in Germany
- Extensive long-term tests
- Replaceable heads

MASTERmatic M25 L /M05 L Mini – small head, big deal.



KaVo MASTERmatic M25 L

The combination of head size, angle combination, hard metal bur guide, Triple Gear and exchangeable spray filter makes for the best high-speed contra-angle handpiece that is commercially available.

- Best visibility due to reduced head dimensions and improved angle of view (H = 13.5 mm; Ø = 10.3 mm)
- Amazingly quiet operation thanks to Triple-Gear technology for relaxed work without bothersome vibrations
- Comfortable for both dentist and patient due to very low noise level during treatment (55 dB(A))
- More space due to the patented KaVo 100°/19° head/knee angle combination
- More safety: Exchangeable spray microfilter ensures optimal cooling and prevents thermal damage to the tooth
- **New addition to the MASTERmatic Series:** High-speed handpiece M05 L with miniature head specifically for short-shank burs (16.5 mm). Major benefit if access is very difficult, such as, e.g., in the treatment of children and elderly patients.

Mat. no. 1.009.3640

Head volumes compared



* Head sizes compared to the most popular high-speed handpiece throughout the world, the KaVo GENTLEpower 25 LP

The inner values are of the essence.

Very small head dimensions for perfect visibility even with more complex molar preparations

3-nozzle spray with ultrafine spray for optimum cooling

Glass rod light conductor with up to 25,000 Lux for safe recognition of the preparation margins

Low noise level, low vibration operation during treatment (55 dB(A))

Triple-Gear technology for amazingly quiet operation without bothersome vibrations

KaVo Plasmatec coating for a perfect grip and excellent hygiene

Exchangeable spray microfilter for always effective and trouble-free spray cooling

High-tech Friction Grip chuck for maximum durability and reliability

KaVo push-button chuck system with a retention power of up to 30 N for secure, powerful retention of the bur and easy operation

KaVo original ceramic ball bearings extend the service life far beyond the average and provide excellent, vibration-free operation

Patented KaVo 100°/19° head/knee angle combination for maximum unobstructed visibility and freedom of movement

Thermodisinfected and sterilisable up to 135 °C

Can be attached to all KaVo INTRAMatic LUX motors and motors with a connector in accordance with ISO 3964 / DIN 13940



KaVo. Dental Excellence.

KaVo MASTERmatic shanks – unlimited versatility.

Compose your handpiece to suit your needs. Start with our contra-angle handpiece shanks in all common transmission ratios. Combine them with the INTRA head you need. Your personal optimal solution.



KaVo MASTERmatic LUX M20 L

- Transmission ratio 1:1
- Glass rod light conductor up to 25,000 Lux
- **The practice standard** for caries excavation
- Now with exchangeable spray filter
- **Maximum treatment flexibility** and options provided by 14 exchangeable heads

Mat. no. 1.009.3620



KaVo MASTERmatic LUX M07 L

- Reduction ratio 2.7:1
- Glass rod light conductor up to 25,000 Lux
- For caries excavation and applications in prophylaxis
- Now with exchangeable spray filter
- **Maximum treatment flexibility** and options provided by 14 exchangeable heads
- **Compatible** with all INTRA LUX heads

Mat. no. 1.009.3610



KaVo MASTERmatic LUX M29 L

- Reduction ratio 7.4:1
- Glass rod light conductor up to 25,000 Lux
- Specifically for endodontics applications
- Now with exchangeable spray filter
- **Maximum treatment flexibility** and options provided by 14 exchangeable heads
- **Compatible** with all INTRA LUX heads

Mat. no. 1.009.3580



KaVo MASTERmatic LUX M10 L

- For both handpiece and contra-angle bur
- Glass rod light conductor up to 25,000 Lux
- Also useful for simple **extra-oral technical work** such as prosthesis corrections

Mat. no. 1.009.3570

KaVo INTRA heads – simply brilliant, made of steel.

65 % harder than before and twice as resistant to deformation as titanium. These are the new KaVo INTRA heads – the best and most durable ones ever:

- Durable – thanks to the use of special state-of-the-art stainless steel
- Hygienic – due to the reduction of grooves and edges
- Reliable – the best KaVo quality and 2 years warranty
- Covering all treatments – 14 different drill heads for all indications



For specialised applications, you invest in just a single handpiece head (no further contra-angle handpiece required!) and save each time: up to

500,- €!

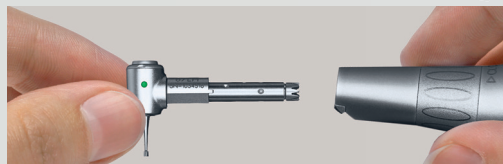


14 exchangeable heads for maximum flexibility.

Whatever you intend to do, our broad range of INTRA heads always puts the optimal head in your hands. Select the head that suits your needs and combine it with a contra-angle handpiece shank. For all applications, for the best results.

M07 L

- Reducing shank 2.7:1 with light
- Internally guided, separate cooling media
- Plasmatec coating



Easy to change: KaVo INTRA drill heads fit all KaVo shanks

STANDARD PREPARATION

Ideal for cavity and crown preparation, finishing and excavating

M20 L (1:1)

M07 L (2.7:1)

L68

TRANSMISSION RATIO
1 : 1
MAX. SPEED
40,000
TYPE OF BUR
contra-angle bur
2.35 mm



L66 B

REDUCTION RATIO
3 : 1
MAX. SPEED
13,300
TYPE OF BUR
contra-angle bur
2.35 mm



L80

TRANSMISSION RATIO
1 : 1
MAX. SPEED
40,000
TYPE OF BUR
FG bur
1.6 mm



L52 Mini

TRANSMISSION RATIO
1 : 1
MAX. SPEED
40,000
TYPE OF BUR
contra-angle bur
2.35 mm



L68 B

TRANSMISSION RATIO
1 : 1
MAX. SPEED
40,000
TYPE OF BUR
contra-angle bur
2.35 mm



L67

REDUCTION RATIO
2 : 1
MAX. SPEED
20,000
TYPE OF BUR
contra-angle bur
2.35 mm



PROPHYLAXIS

Perfect interplay with all common brushes and cups

M07 L (2.7:1)

L31

REDUCTION RATIO
2 : 1

MAX. SPEED
approx. 3,000

TYPE OF BUR
polishing cups and
brushes



L61 R

MOTION
dampened stroke
0.8 mm
36 snap-in positions

TYPE OF BUR
Interdental files,
e.g. intensive



L53

MOTION
back-and-forth
rotation
by approx. 60°

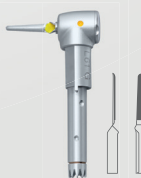
TYPE OF BUR
contra-angle bur
2.35 mm



L61 G

MOTION
dampened stroke
0.8 mm
rotates freely

TYPE OF BUR
Interdental files,
e.g. intensive



SURGERY

Extremely small size for microsurgical procedures

M20 L (1:1)

L22

TRANSMISSION
RATIO
1 : 1

MAX. SPEED
20,000

TYPE OF BUR
round bur
and/or U-inverted
cone bur
size 0 and 2



ENDODONTICS

For endodontics application in combination with
KaVo ESTETICA® E80, E70 or E50

M29 L (7.4:1)

L53

MOTION
back-and-forth
rotation
by approx. 60°

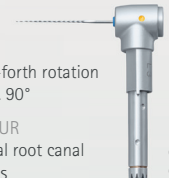
TYPE OF BUR
For root canal
handpieces 2.35 mm



L3

MOTION
back-and-forth rotation
by approx. 90°

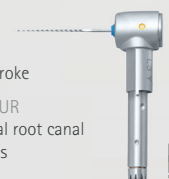
TYPE OF BUR
For manual root canal
handpieces



L3 Y

MOTION
0.4 mm stroke

TYPE OF BUR
For manual root canal
handpieces

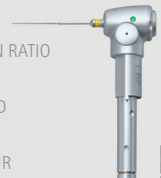


L62

REDUCTION RATIO
10 : 1

MAX. SPEED
540

TYPE OF BUR
For root canal
handpieces
2.35 mm



M10 L (1:1)

L68 B

TRANSMISSION RATIO
1 : 1

MAX. SPEED
40,000

TYPE OF BUR
contra-angle bur
2.35 mm



L66 B

REDUCTION RATIO
3 : 1

MAX. SPEED
13,300

TYPE OF BUR
contra-angle bur
2.35 mm



KaVo Hygiene. Care and Protection for your handpiece investment.

KaVo QUATTROcare PLUS 2124 A

- **Optimal servicing quality** with QUATTROcare PLUS and Spray
- **Simple and comfortable handling** and fast processing sequence
- **Low initial purchase and consumables costs**

Mat. no. 1.008.3805



KaVo Spray

- **Manual servicing** of handpieces and turbines
- **Effective and value-conserving**

Mat. no. 0.411.9640



KaVo CLEANspray / DRYspray

- **Manual intensive cleaning** for removal of residual protein (German RKI risk assessment: only for semi-critical B)

Mat. no. 1.007.0573



KaVo product support services.

Top standards require top service - a special expert hotline for KaVo handpieces ensures that you get professional support quickly to assist you with any questions. In addition, enjoy our comprehensive KaVo Service. Anything from quickly available spare parts and current studies to user-friendly workshops and inexpensive replacement parts. We look forward to helping you.



Technical hotline



Advanced training/workshops



Spare parts



Replacement parts



Repair service



Studies



User reports

AS PARTNERS FOR YOUR CONFIDENCE



For more information, please send a fax to: **+49 7351 56-7-1414**

I am interested in the KaVo MASTERmatic Series of handpieces.
Please contact me.

Name _____

Street _____

Postal code/City _____

Phone _____

Fax _____

Email _____

KaVo customer number _____

Date, Signature



For more information, please visit www.kavo.com/mastermatic

MASTERmatic Series	Description	Mat. No.
MASTERmatic LUX M25 L	1: 5 contra-angle handpiece	1.009.3630
MASTERmatic LUX M05 L Mini	1: 5 contra-angle handpiece	1.009.3640
MASTERmatic LUX M07 L	2.7:1 shank	1.009.3610
MASTERmatic LUX M20 L	1:1 shank	1.009.3620
MASTERmatic LUX M29 L	7.4:1 shank	1.009.3580
MASTERmatic LUX M10 L	1:1 handpiece	1.009.3570

INTRA LUX Heads	Description	Mat. No.
INTRA Head L68	1:1 transmission ratio	1.008.1833
INTRA Head L68 B	1:1 transmission ratio	1.008.1834
INTRA Head L67	2:1 reduction ratio	1.008.1832
INTRA Head L66 B	3:1 reduction ratio	1.008.1831
INTRA Head L80	1:1 transmission ratio FG tension	1.004.4456
INTRA Mini Head L52	1:1 transmission ratio	1.008.1825
INTRA Prophy Head L31	2:1 reduction ratio for snap on screw on	1.008.1824
INTRA EVA Head L61 R	Dampened stroke of 0.8 mm, 36 snap-in positions	1.008.1829
INTRA EVA Head L61 G	Dampened stroke of 0.8 mm, rotates freely	1.008.1828
INTRA Endo Head L3	Back-and-forth rotation by 60°	1.008.1822
INTRA Endo Head L3 Y	Up and down stroke of 0.4 mm	1.008.1823
INTRA Endo Head L53	Back-and-forth rotation by 60°	1.008.1826
INTRA Head L62	10:1 reduction ratio	1.008.1830
INTRA Micro Head L22	Features extremely small dimensions for microsurgical procedures such as, e.g., apicectomy (through a bone window)	1.008.1835



KaVo. Dental Excellence.